



# GMT MONTHLY MEMBERSHIP PROGRESS REPORT

Results as of: 6/30/2018

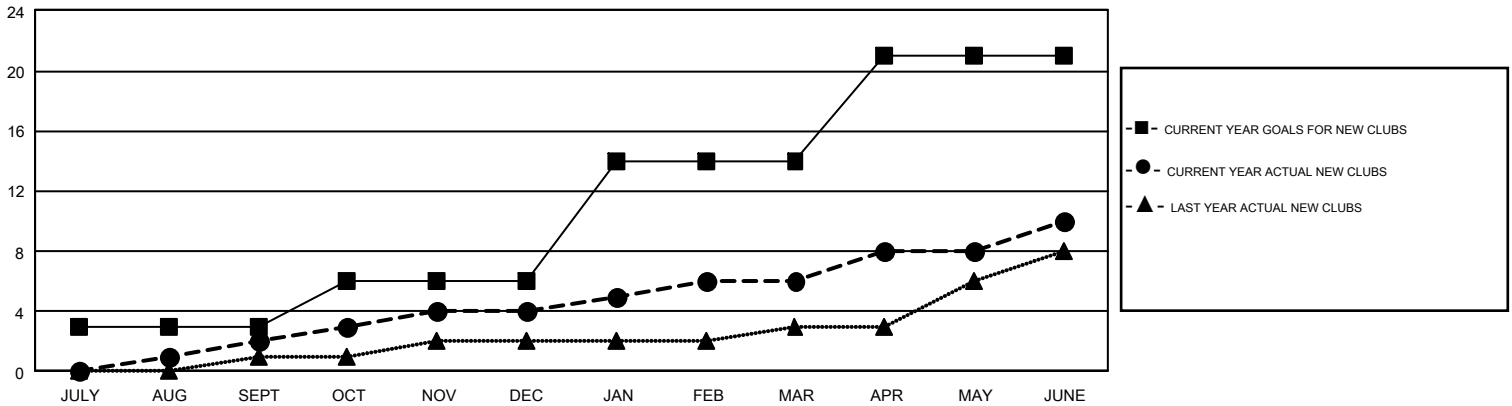
## GMT Constitutional Area 7, Group A

GMT: OPEN

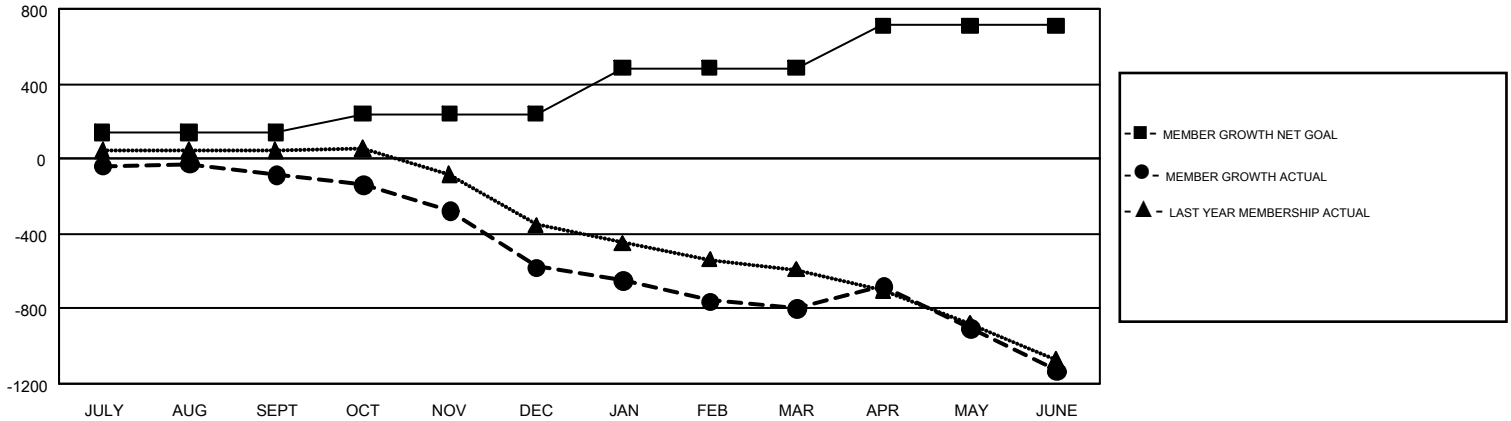
REPORT DOES NOT INCLUDE CLUBS IN UNDISTRICTED AREAS.

Clubs				Members			
RESULTS FOR 2017-2018				RESULTS FOR 2017-2018			
QUARTER	NEW CLUB GOAL	NEW CLUBS	DROPPED CLUBS	QUARTER	MEMBER GROWTH NET GOAL	MEMBER GROWTH ACTUAL	DROPPED MEMBERS ACTUAL (including transfers)
JULY/AUG/SEPT	3	2	7	JULY/AUG/SEPT	139	855	812
OCT/NOV/DEC	3	2	6	OCT/NOV/DEC	100	650	1,041
JAN/FEB/MAR	8	2	7	JAN/FEB/MAR	246	779	879
APR/MAY/JUNE	7	4	3	APR/MAY/JUNE	226	1,341	1,537

GOALS AND ACTUAL NEW CLUBS CUMULATIVE



GOALS AND ACTUAL MEMBERS CUMULATIVE



DROPPED CLUBS: 23	868 CLUBS OF 1,226 ADDED 1 OR MORE NEW MEMBERS	<u>GENDER DISTRIBUTION</u>
<u>DROPPED MEMBERS</u>	<a href="#">CLICK HERE FOR CUMULATIVE MEMBERSHIP DATA</a>	MALE                    16,761 (66.35%)
DECEASED                    333		FEMALE                    8,502 (33.65%)
CLUB CANCELLED                    16		TOTAL FAMILY UNIT MEMBERS                    0
OTHER                    3,920		FAMILY MEMBERS PAYING HALF DUES                    0
TOTAL                    4,269		